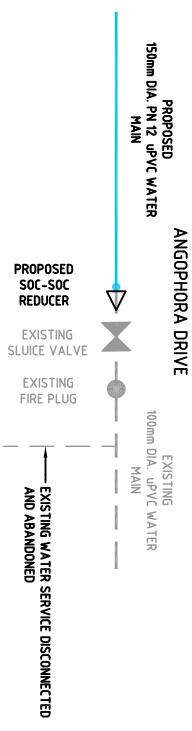


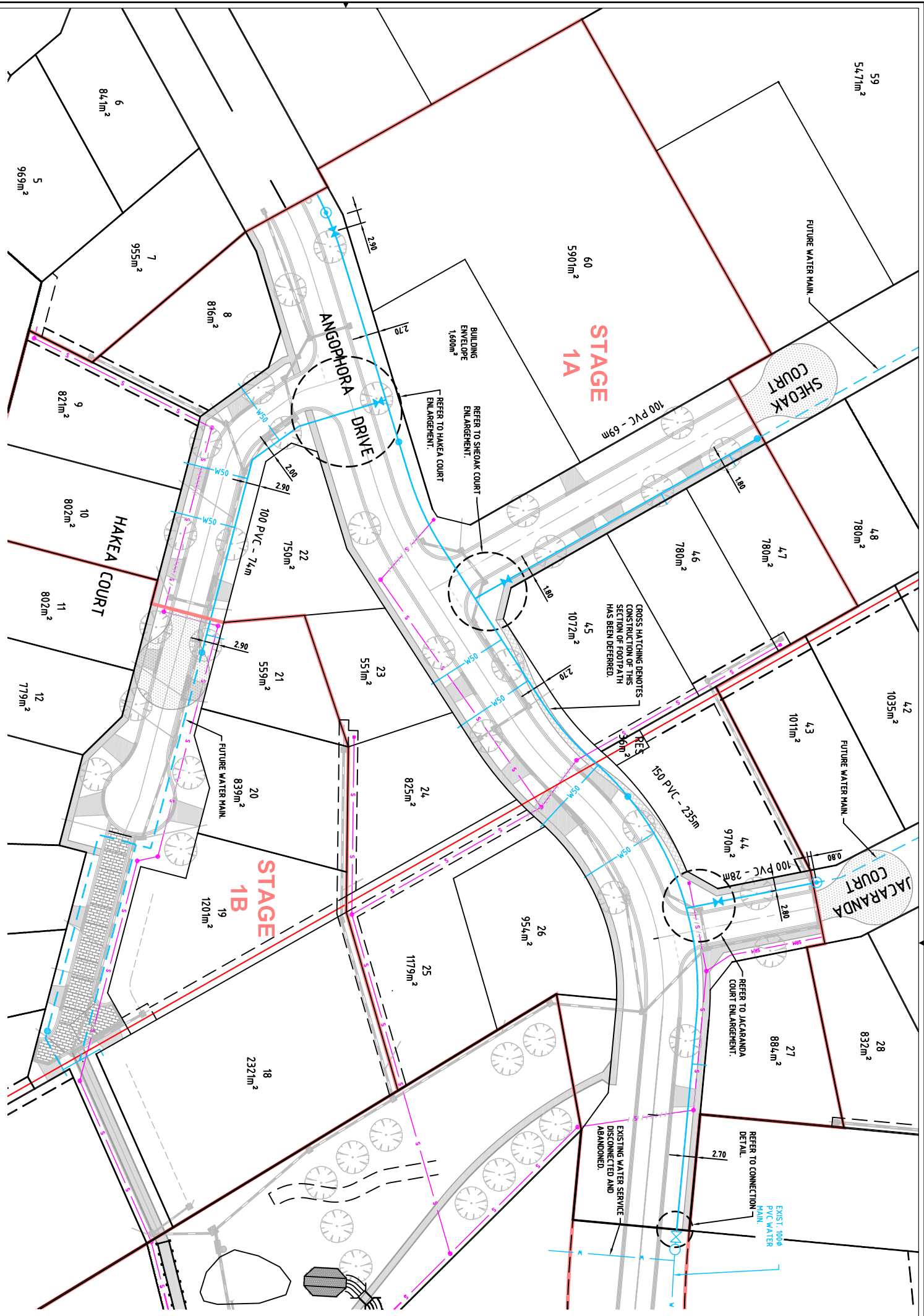
LEGEND	EXISTING	PROPOSED
STORMWATER PIPE	—	—
STABILISED SAND BACKFILL	▨	▨
STORMWATER HIT	■	■
SUB-SOIL DRAINAGE	—	—
ROLLOVER KERB	—	—
FUTURE ROLLOVER KERB	—	—
SEMI-MOUNTABLE KERB	—	—
VEHICLE CROSSING	—	—
SEWER MAIN	—	—
SEWER JUMP UP	—	—
SEWER MANHOLE	○	○
SEWER I.S.	—	—
SEWER ACCESS	—	—
SEWER MANHOLE I.D.	—	—
SEWER MANHOLE INVERT LEVEL	—	—
DIRECTION OF SEWER FLOW	—	—
SLUICE VALVE	—	—
WATER CONDUIT	—	—
WATER MAIN (UPVC)	—	—
WATER MAIN (DICI)	—	—
FIRE PLUG	—	—
FIRE PLUG (FOR REUSE IN FUTURE STAGE)	—	—
EXISTING TREES FOR INSPECTION	—	—
MH 2/1	—	—
L.88.61	—	—
PROPOSED 150mm DIA. PN 12 UPVC WATER MAIN	—	—
EXISTING 100mm DIA. PN 12 UPVC WATER MAIN	—	—
PROPOSED SOC-SOC REDUCER	—	—
EXISTING SLUICE VALVE	—	—
EXISTING FIRE PLUG	—	—
EXISTING WATER SERVICE DISCONNECTED AND ABANDONED	—	—

TYPICAL CONNECTION
EXISTING MAIN

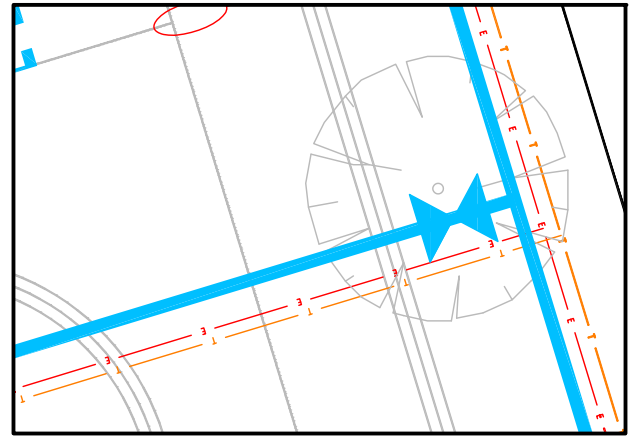


GENERAL NOTES

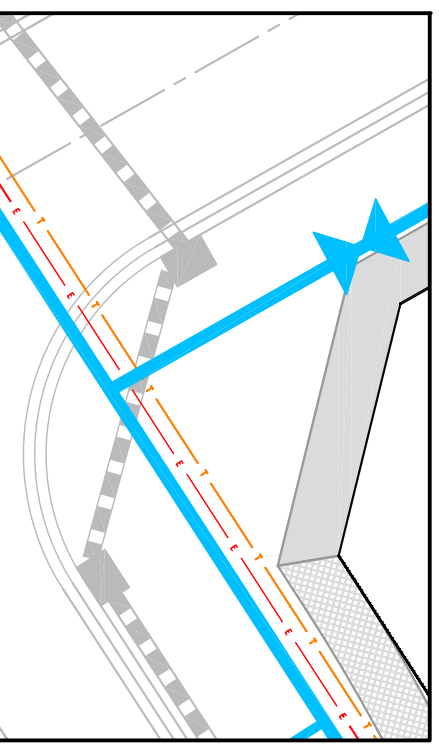
1. ALL LEVELS WHERE SHOWN ARE IN METRES AND TO A.H.D.
2. ALL DIMENSIONS ARE IN METRES UNLESS NOTED OTHERWISE.
3. ALL CONDUITS BENEATH ROADS FOR WATER SUPPLY TAPPINGS ARE MARKED WITH A "W" ON THE KERB. CONDUITS ARE ALSO PROVIDED BENEATH FOOTPATHS WHERE SHOWN.



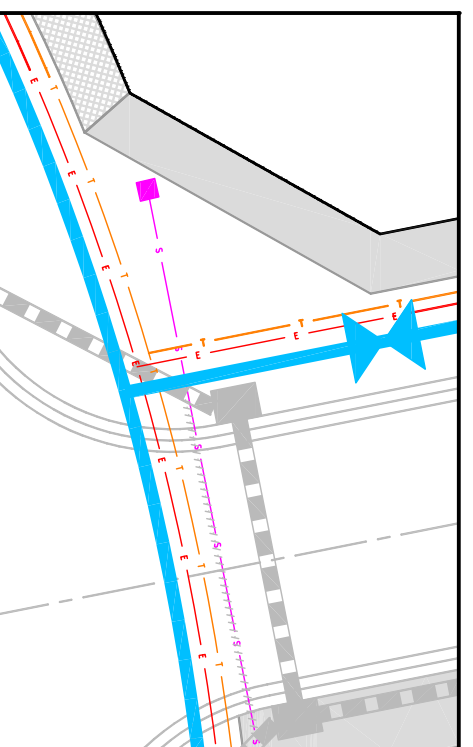
ENLARGEMENT - HAKEA COURT
 SCALE 1:100



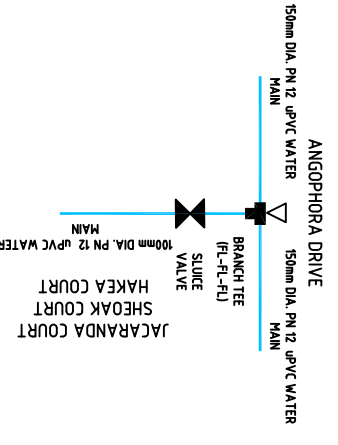
ENLARGEMENT SHEOAK COURT
 SCALE 1:100



ENLARGEMENT JACARANDA COURT
 SCALE 1:100



TYPICAL ARRANGEMENT (ALL COURTS)
AS CONSTRUCTED



AS CONSTRUCTED

DESIGNED	Glenn Ryan	November 2007
DRAFTED	Karen Tidd	November 2007
VERIFIED	Trevor Woodcock	December 2007
3	AS CONSTRUCTED INFORMATION ADDED	3-04-09
2	ISSUED FOR CONSTRUCTION	5-06-08
1	ISSUED FOR CONSTRUCTION	24-04-08
A	INITIAL DRAFT	15-01-08
REV	AMENDMENTS	DATE

